

The All-New '08 Mercury Sable



MERCURY | NEW DOORS OPENED



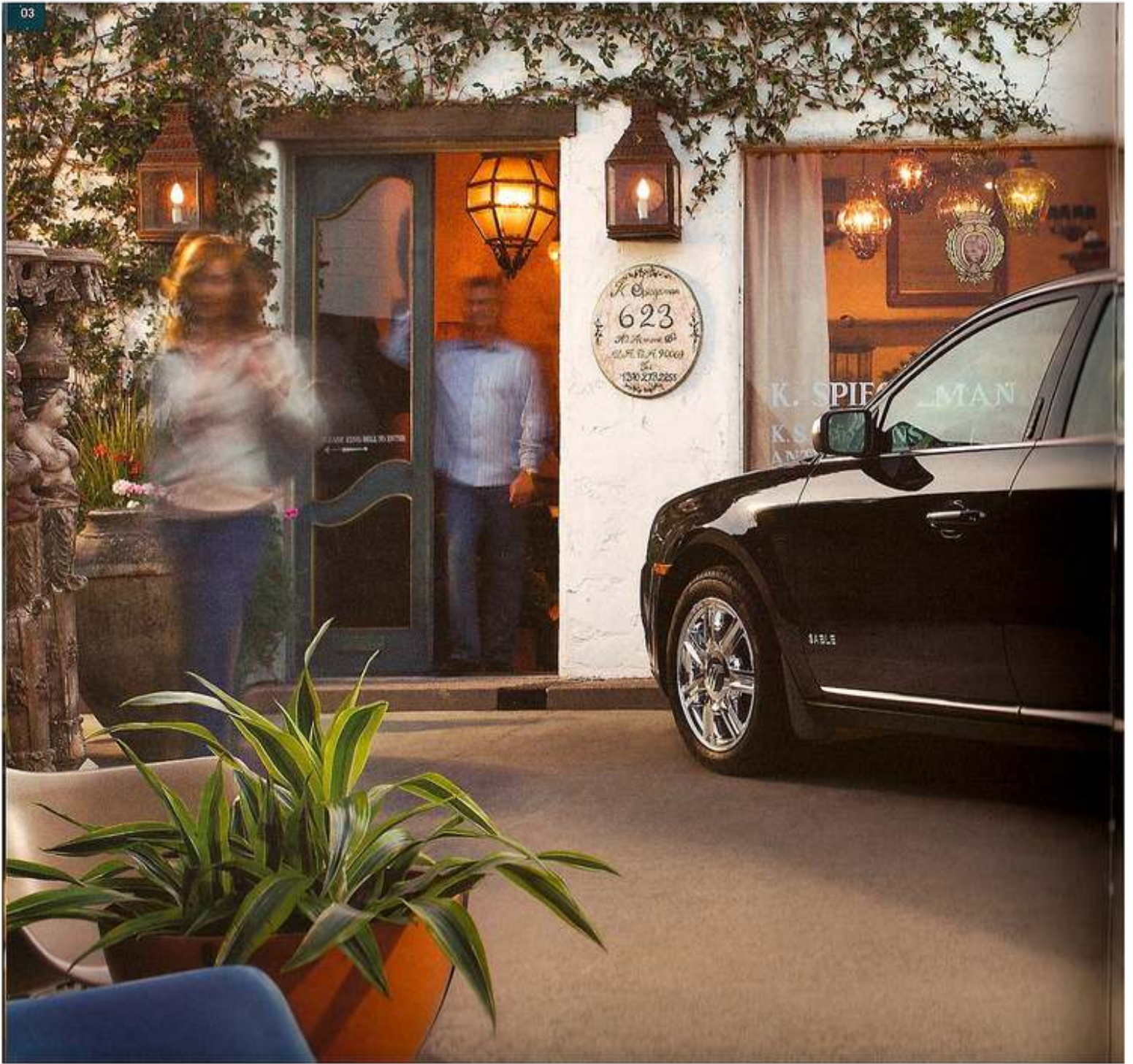


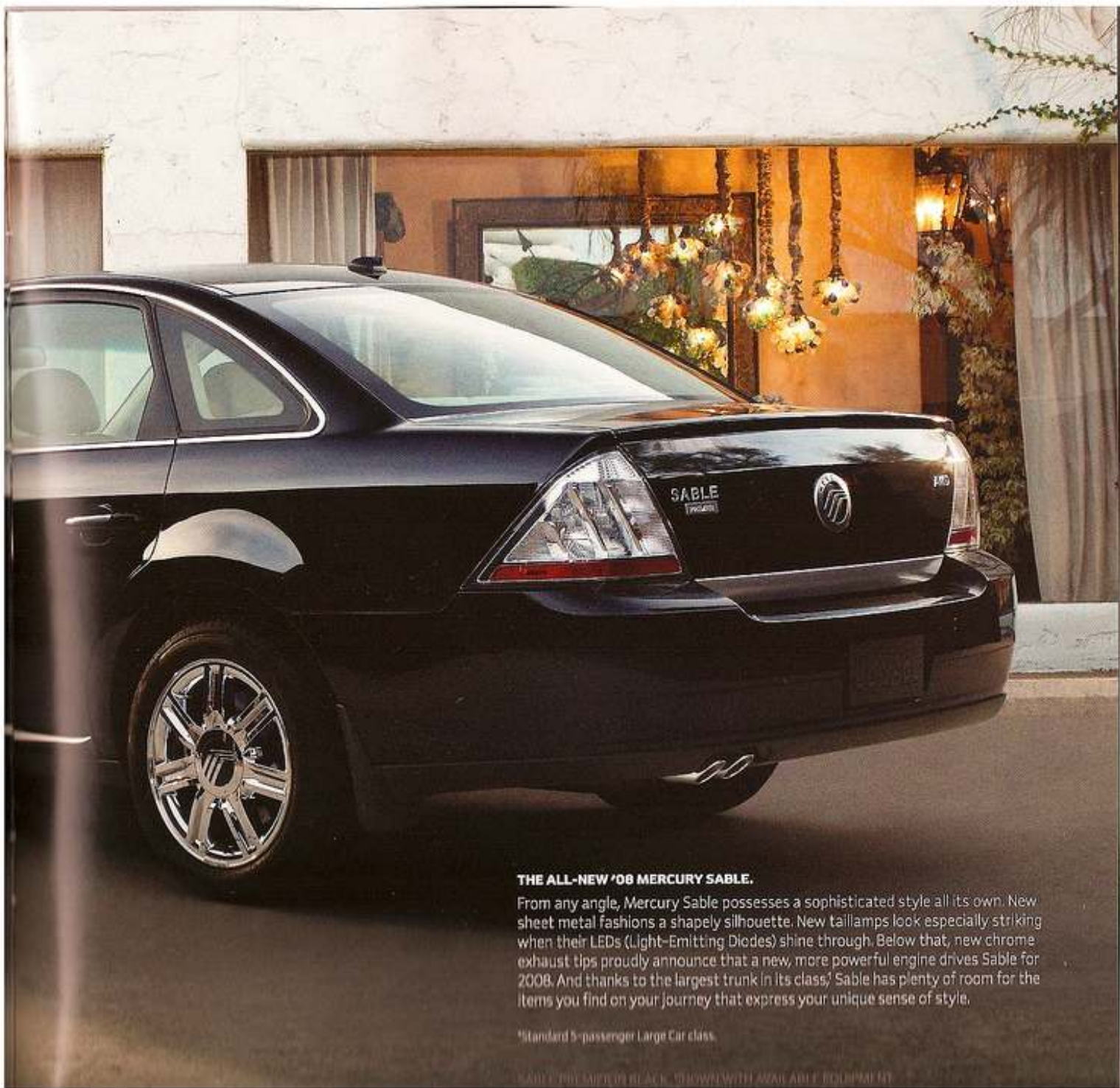
Sable Returns with Style, Substance and Smarts.

THE ALL-NEW '08 MERCURY SABLE.

Artfully designed projector-beam headlamps, a distinctive satin finish on the grille, sideview mirrors and door handles, and available 18" chrome-clad wheels (shown) help define Sable's style. Substantive performance comes courtesy of a new 3.5L Duratec 35 V-6 engine that delivers a lively 263 horsepower. And what could be smarter than available Intelligent All-Wheel Drive that helps improve driving performance on any road. Discover all this and more in the 2008 Sable. From Mercury.

SABLE PREMIER IN SILVER BIRCH METALLIC. SHOWN WITH AVAILABLE EQUIPMENT.



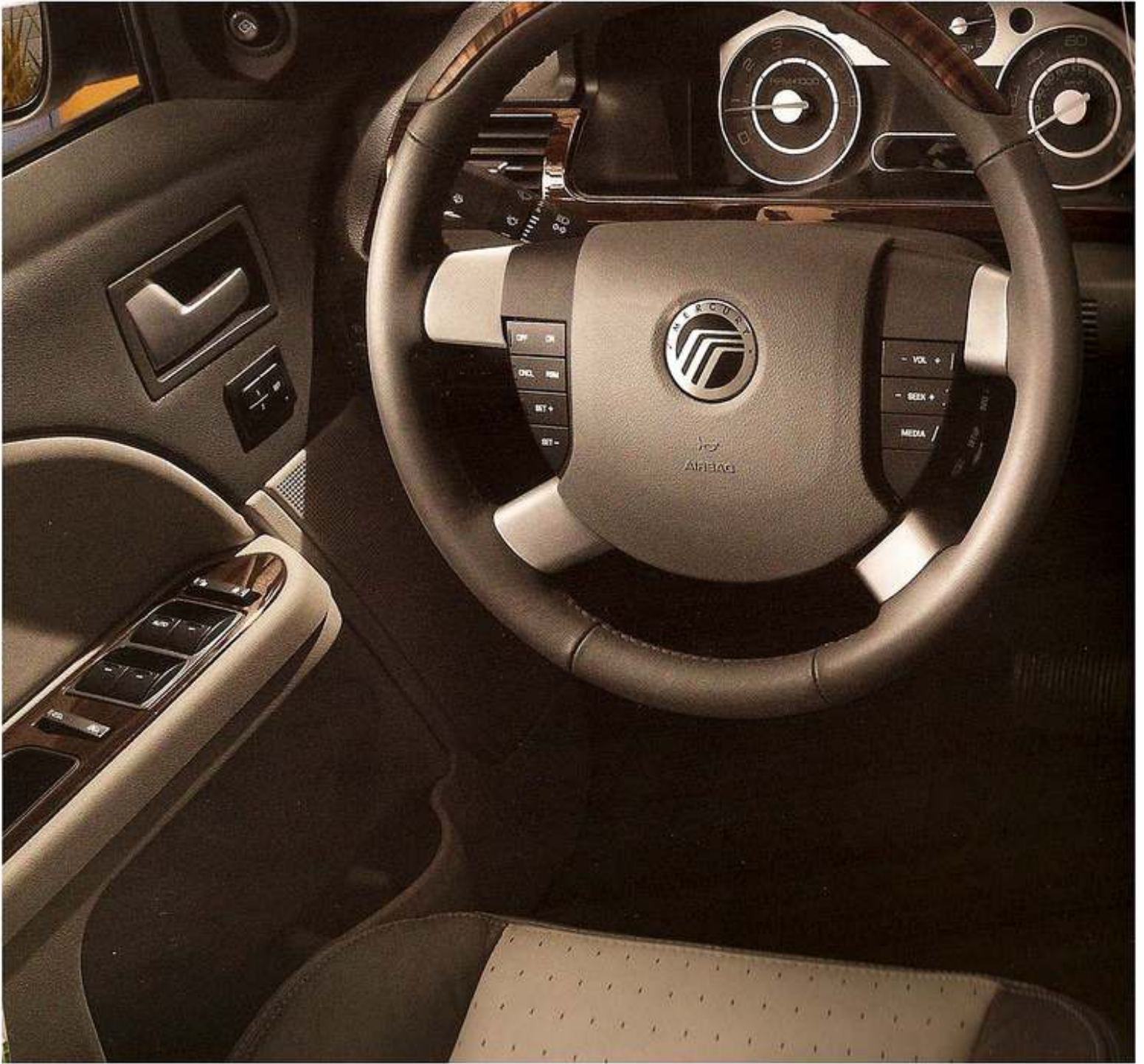


THE ALL-NEW '08 MERCURY SABLE.

From any angle, Mercury Sable possesses a sophisticated style all its own. New sheet metal fashions a shapely silhouette. New taillamps look especially striking when their LEDs (Light-Emitting Diodes) shine through. Below that, new chrome exhaust tips proudly announce that a new, more powerful engine drives Sable for 2008. And thanks to the largest trunk in its class,* Sable has plenty of room for the items you find on your journey that express your unique sense of style.

*Standard 5-passenger Large Car class.

SABLE 3.0L SUPERIOR BLACK. SHOWN WITH AVAILABLE EQUIPMENT.





AN ELEGANT BALANCE OF STYLE AND COMFORT.

Inside the 2008 Mercury Sable, style and comfort reign. Its new speedometer, tachometer and gauges reflect a modern design theme and are ringed in chrome. Satin-finish cuffs grace the steering wheel, while available new San Macassar woodgrain accents enliven the instrument panel, center stack and center console. On Sable Premier, the available Premier Wood Package* (shown) adds the same accents to the shift knob and steering wheel as well. Standard leather-trimmed seats on Sable Premier feature elegant contrast stitching and a front-seat heating feature with 2 heat settings to enhance your comfort whenever the temperature dips. Other comforting features include a 6-way power driver seat (8-way power with memory feature on Sable Premier) and a leather-wrapped steering wheel with convenient cruise control and audio system buttons.

*Late availability.

**MAXIMUM SPACE AND FUNCTIONALITY.**

The new 2008 Mercury Sable features the most spacious interior in its class. Up front, SUV-like Command Seating™ gives you easy entry and exit, a more upright seating position, and an excellent view of the road ahead. A handy center floor console features a two-tiered storage system. Open the cover to expose the upper tier, with just enough storage for a digital camera or cell phone. Open both the lid and the storage bin for access to a second, larger level that goes nearly to the floor of the vehicle. This hidden storage area offers out-of-sight security for more important items, like a purse.

If that's not functional enough, the center console also houses the standard audio input jack for plug-and-play capability with your digital music player, as well as an additional power point to keep electronic items recharged. Those seated comfortably in the rear will enjoy their own advantages. Rear-seat head room is best in class. In Sable Premier, a rear-seat center armrest features 2 cupholders and a small storage compartment. And with the largest trunk in its class, Sable can hold everything you need to bring along for the ride.





Renew Your Enthusiasm for Sable.

NEW 263-HP V-6 ENGINE SUPPLIES AMPLE POWER.

The all-new Sable has more than enough power to throw any commute into high gear. The advanced technology of Sable's powerful new 3.5L Duratec V-6 engine includes a lightweight die-cast aluminum block, a dual-plenum intake manifold, a high 10.3:1 compression ratio, and Intake Variable Cam Timing (IVCT) to help ensure a smooth idle and a broad torque curve. The result?

A stirring 263 hp and 249 lb.-ft. of torque. You'll feel it on every open road, appreciate it on every freeway entrance ramp, and look forward to it in every passing situation. Excellent launch and acceleration performance result from Sable's new 6-speed automatic transmission, which uses a wide-ratio gear span to deliver maximum performance.

SABLE PREMIER IN LIGHT SAGE METALLIC. SHOWN WITH AVAILABLE EQUIPMENT.



VOL

1 2 3 4 5 6

LOAD

PUSH

MEDIA

SOUND

PHONE

MENU

SEEK

AUDIO OFF

10:06 AM

432 SPRING ST NW
ATLANTA, GA

0.25 mi

EMORY RAYBROOK LONG HOSPITAL

PIEDMONT AVE NE

ROULEAU AVE NE

MAP

DEST

NAV

REPEAT

TUNE

CURRENT POSITION

SET AS DEST

POI OFF



AUTO

OFF

68°F

A/C 75°F

F/C

EXT

18V



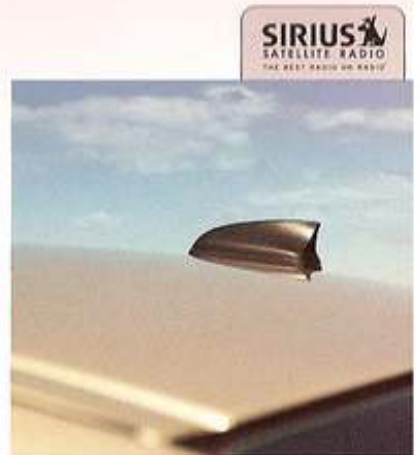
A/C

DUAL



18V





Get Informed, Entertained and Enlightened.

DIGITAL DIRECTIONS (WITHOUT HAVING TO ASK).

With Sable's optional voice-activated, DVD-based Navigation System (shown at left), stopping to ask for directions will be a thing of the past. Neatly integrated into the Audiophile® Sound System, maps and menus are clearly displayed on a large, touch-screen 6.5" color LCD monitor, so locating the nearest ATM, home improvement store or restaurant is easy.

ENHANCE YOUR OUTPUT.

Sable's available Audiophile Sound System features 8 strategically placed speakers (8" subwoofer included), 190 watts of power and a 6-disc in-dash CD changer for hours of your favorite music.

THE POWER TO PLUG AND PLAY.

With a standard audio input jack inside the center console, your music library now has wheels. Just connect your digital music player to the jack, and you can broadcast all of your favorite tunes through Sable's speakers.

AIM FOR THE STARS.

We know your music matters. And with over 130 channels, optional SIRIUS Satellite Radio¹ delivers commercial-free music, along with news, sports and personalities. Optional on both Sable models, SIRIUS Satellite Radio includes a complimentary 6-month subscription when ordered.

¹Not available in Alaska or Hawaii. See your Lincoln Mercury Dealer or contact SIRIUS at 1-888-539-4776 for more information.



It's Got You Covered.

INTELLIGENT AWD INSPIRES CONFIDENT DRIVING.

A driving rain can make it slick. Heavy snow makes it almost impassable. And intense heat can soften it up. On the blacktop you travel, road conditions can limit the amount of traction your tires achieve. That's where Sable's Intelligent All-Wheel Drive¹ (AWD) automatically steps in. Constantly monitoring driver and vehicle inputs, Intelligent AWD uses an on-demand electronic center coupler to deliver the appropriate amount of torque to all 4 wheels – anticipating wheel slippage before it even occurs. Under heavy acceleration, for instance, Intelligent AWD proactively allocates torque to the rear wheels *before* the front wheels begin to slip.

In addition to transferring torque from the front axle to the rear, Intelligent AWD works together with standard Traction Control to transfer it side to side on each axle. So even if only one wheel has traction, the system can transfer torque to that wheel to help keep Sable moving. Whether rain, snow or bright sunshine awaits you, Intelligent AWD has you covered.

¹Available.





SABRE PREMIER IN SILVER BIRCH METALLIC. SHOWN WITH AVAILABLE EQUIPMENT.

Functional Comfort.

JUST ONE OF SABLE'S MANY CHARMS.

A 60/40 split-folding rear seat allows maximum functionality in transporting cargo and passengers. With a passenger occupying one side of the seat, the other side can be folded down to allow pass-through access from the trunk for longer items. For skis, Sable's front-passenger seat can also be folded down, allowing you to carry items up to 9' long inside the vehicle.

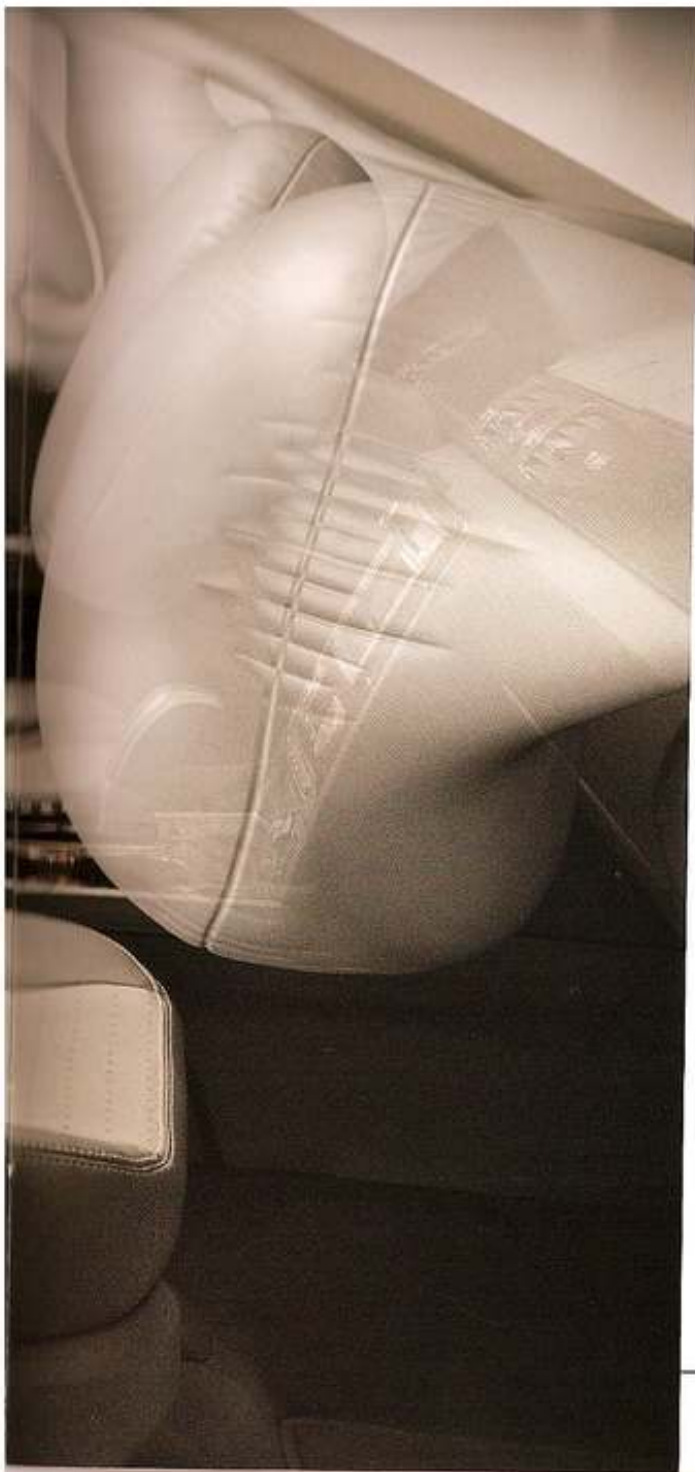
For front-seat passengers in Sable Premier, standard leather-trimmed heated seats provide 2 levels of warming luxury. For the driver, available power-adjustable brake and accelerator pedals with memory feature (available without memory on Sable) can be set to their optimum positions.

To keep rear-seat passengers occupied on trips, Sable Premier's available Rear-Seat DVD Entertainment System includes a large 8" viewing screen along with 2 sets of wireless headphones and a remote control.









Rated The Safest Full-Size Sedan In America.

5-STAR CRASH-TEST SAFETY RATING. IHS "TOP SAFETY PICK"

In an instant, life can take a wrong turn. That's when the all-new Mercury Sable is designed to be at its best. On top of earning the government's highest 5-Star crash test safety rating in 4 categories (including front and side impact), the innovative vehicle structure of Mercury Sable – equipped with optional AdvanceTrac® Electronic Stability Control – also makes it a unanimous "Top Safety Pick" of the Insurance Institute for Highway Safety (IIHS). Sable is *the only vehicle in its class* to achieve top crash test results and earn the highest ratings in all 3 IIHS categories.

Every 2008 Sable features a suite of 6 standard airbags to enhance your protection in the event of an accident. Sable's Personal Safety System® customizes the deployment of the dual-stage front airbags. Front-seat side airbags offer an extra margin of chest protection for the driver and front passenger, while the side-curtain airbags of the Safety Canopy™ System provide head-protection coverage for outboard-seated occupants in both rows. Sensors direct their deployment in certain types of side-impact collisions or rollover events.

The best defense, of course, is avoiding an accident altogether. Sable's newly available AdvanceTrac¹ can help with that. With sensors to measure oversteer and yaw, the system constantly monitors vehicle speed, throttle position and steering wheel angle. If it senses wheel slip or loss of traction, AdvanceTrac applies braking where needed to help keep Sable tracking correctly on its intended path.

¹Remember that even advanced technology cannot overcome the laws of physics. It's always possible to lose control of a vehicle due to inappropriate driver input for the conditions.



Let Your Voice Be Heard.

SABLE DELIVERS QUIET QUALITY.

With an available voice-activated, DVD-based Navigation System and the over 130 channels of available SIRIUS Satellite Radio, the interior of the all-new Sable is designed to be exceedingly quiet at highway speeds.

To achieve this, new expandable-foam pellets in the A-pillars help to reduce wind noise, while a new sound-absorbing material is in the doors, headliner and vehicle pillars. Mastic in the floor and a new sound-absorbing material in the interior further reduces road, wind and

powertrain noise. The heating and ventilation system uses a large piston compressor and new air delivery system to improve airflow while greatly limiting noise. Under the hood, Sable's new 3.5L Duratec V-6 engine is mounted to the body using a pendulum mounting method to reduce vibration and structure-borne noise. And outside, sideview mirrors are mounted low on the doors to reduce wind noise.

So whether you're talking to your passengers or talking on the phone, your voice will be heard inside the 2008 Sable.



LIGHT SAGE¹



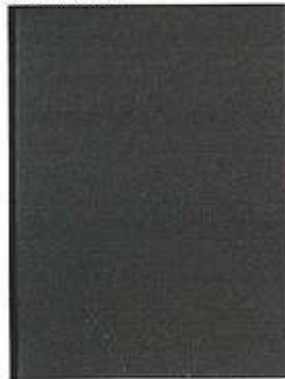
LIGHT TUNDRA



DUNE PEARL



DARK INK BLUE¹



OXFORD WHITE



LIGHT ICE BLUE¹



MERLOT



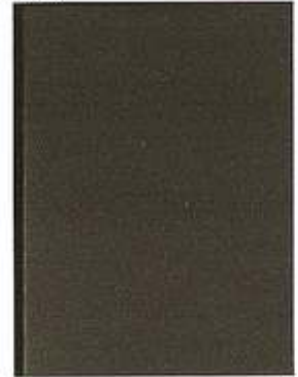
SILVER BIRCH



ALLOY



BLACK



Mercury uses clearcoat paint for beauty and protection. All exterior paints are Metallic except for Oxford White and Black. Colors are representative only.

New for 2008.

MEDIUM LIGHT STONE CLOTH



CAMEL CLOTH



MEDIUM DARK FLINT LEATHER
LIGHT STONE LEATHER INSERTS



CHARCOAL BLACK LEATHER



LIGHT CAMEL LEATHER



■ SABLE ■ PREMIER □ AVAILABLE

STANDARD FEATURES

BASE MODEL DIMENSIONS

Wheelbase 112.9"
 Length 202.1"
 Width (excluding mirrors) 74.5"
 Height 61.5"
 Front track 64.3"
 Rear track 64.4"
 Head room (front/rear) 39.6*/38.8"
 Leg room (front/rear) 41.3*/41.2"
 Hip room (front/rear) 53.7*/53.6"

CAPACITIES

Fuel capacity 20 gal.
 Seating capacity 5
 Passenger volume 108.0 cu. ft.
 Cargo volume 21.2 cu. ft.

*Always wear your safety belt and secure children in the rear seat.
 †Requires leather-trimmed seats and Interior Convenience Package. Available only on Sable array.
 ‡Not available with Rear-Seat DVD Entertainment System.
 §Not available with power moonroof.
 ¶Requires Interior Convenience Package when ordered on Sable array.
 ¶¶Not available with Light Camel interior. Late availability.
 See your Lincoln Mercury Dealer or contact SIRIUS at 1-888-539-7474 for more information. "SIRIUS" and the SIRIUS dog logo are registered trademarks of SIRIUS Satellite Radio Inc.
 Audiophile is a registered trademark of Audiophile, Inc.

POWERTRAIN/FUNCTIONALITY

3.5L Duratec 35 DOHC V-6 engine with 6-speed automatic transmission
 4-wheel disc Anti-lock Brake System (ABS)
 4-wheel independent suspension
 17" 7-spoke bright-aluminum wheels with P215/60R17 all-season BSW tires
 18" 7-spoke bright-aluminum wheels with P225/55R18 all-season BSW tires
 Front-wheel drive (FWD)
 Hydraulic power steering

EXTERIOR

Automatic headlamps with wiper-activated headlamp feature
 Dual chrome exhaust tips
 Fixed-interval windshield wipers
 Front fog lamps
 LED (Light-Emitting Diode) taillamps
 Power sideview mirrors with satin-finish accents
 Power, heated sideview mirrors with satin-finish accents, security approach lamps and memory
 Satin-finish waterfall grille
 Solar-tinted glass

INTERIOR

Accessory delay for power features
 Adjustable head restraints
 Air conditioning
 Dual-zone Electronic Automatic Temperature Control
 AM/FM stereo/single-CD player with clock
 Audiophile® Sound System with AM/FM stereo/6-disc in-dash CD changer with MP3 capability and 8 speakers
 Audio input jack
 Covered illuminated visor vanity mirrors
 Front clamshell center floor console with armrest, beverage holders and two-tiered storage
 Leather-wrapped steering wheel with secondary audio and cruise controls and tilt column
 Outside temperature display
 Power door locks with child-safety rear door locks
 Power windows with one-touch-up/down driver-side feature
 Premium cloth front bucket seats with 6-way power driver seat
 Premium leather-trimmed heated front bucket seats, 8-way power driver seat with memory and driver and front-passenger manual lumbar support
 Rear 60/40 split-folding seat with tip-fold-flat feature
 Universal Garage Door Opener

SECURITY/SAFETY

Personal Safety System® for driver and front passenger with dual-stage front airbags, safety belt pretensioners, safety belt energy-management retractors, safety belt usage sensors, driver-seat position sensor, crash severity sensor, restraint control module and Front-Passenger Sensing System

	SABLE	PREMIER
3.5L Duratec 35 DOHC V-6 engine with 6-speed automatic transmission	■	■
4-wheel disc Anti-lock Brake System (ABS)	■	■
4-wheel independent suspension	■	■
17" 7-spoke bright-aluminum wheels with P215/60R17 all-season BSW tires	■	
18" 7-spoke bright-aluminum wheels with P225/55R18 all-season BSW tires		■
Front-wheel drive (FWD)	■	■
Hydraulic power steering	■	■
EXTERIOR		
Automatic headlamps with wiper-activated headlamp feature		■
Dual chrome exhaust tips	■	■
Fixed-interval windshield wipers	■	■
Front fog lamps	■	■
LED (Light-Emitting Diode) taillamps	■	■
Power sideview mirrors with satin-finish accents	■	
Power, heated sideview mirrors with satin-finish accents, security approach lamps and memory		■
Satin-finish waterfall grille	■	■
Solar-tinted glass	■	■
INTERIOR		
Accessory delay for power features	■	■
Adjustable head restraints	■	■
Air conditioning	■	■
Dual-zone Electronic Automatic Temperature Control		■
AM/FM stereo/single-CD player with clock	■	
Audiophile® Sound System with AM/FM stereo/6-disc in-dash CD changer with MP3 capability and 8 speakers		■
Audio input jack	■	■
Covered illuminated visor vanity mirrors	■	■
Front clamshell center floor console with armrest, beverage holders and two-tiered storage	■	■
Leather-wrapped steering wheel with secondary audio and cruise controls and tilt column	■	■
Outside temperature display		■
Power door locks with child-safety rear door locks	■	■
Power windows with one-touch-up/down driver-side feature	■	
Premium cloth front bucket seats with 6-way power driver seat		■
Premium leather-trimmed heated front bucket seats, 8-way power driver seat with memory and driver and front-passenger manual lumbar support		■
Rear 60/40 split-folding seat with tip-fold-flat feature	■	■
Universal Garage Door Opener		■
SECURITY/SAFETY		
Personal Safety System® for driver and front passenger with dual-stage front airbags, safety belt pretensioners, safety belt energy-management retractors, safety belt usage sensors, driver-seat position sensor, crash severity sensor, restraint control module and Front-Passenger Sensing System	■	■

Comparisons based on 2007 competitive models (Standard 5-passenger Large Car class), publicly available information and Ford certification data at time of printing. Some features discussed may be optional. Vehicles shown may contain optional equipment. Features shown may be offered only in combination with other options or subject to additional ordering requirements or limitations. Dimensions shown may vary due to optional features and/or production variability. Following publication of the catalog, certain changes in standard equipment, options and the like, or product delays may have occurred which would not be included in these pages. Your Lincoln Mercury Dealer is the best source for up-to-date information. Lincoln Mercury reserves the right to change product specifications at any time without incurring obligations.

■ STANDARD □ AVAILABLE

SECURITY/SAFETY (continued)

	SABLE	PREMIER
Front-seat side airbags ²	■	■
Safety Canopy™ System with side-curtain airbags ² and rollover sensor	■	■
Battery saver	■	■
Belt-Minder® safety belt reminder	■	■
Lower anchors and tether anchors for child-safety seats (LATCH) on rear outboard seat positions	■	■
Remote keyless-entry system with 2 integrated key fobs, driver door-mounted keypad and illuminated entry	■	■
Safety belt restraint system with 3-point safety belts in all seating positions and front height-adjustable shoulder belts	■	■
SecuriLock® passive anti-theft ignition system	■	■
Side-intrusion door beams	■	■
SPACE (Side Protection And Cabin Enhancement) Architecture™	■	■
Traction Control	■	■

AVAILABLE FEATURES

	SABLE	PREMIER
18" 7-spoke chrome-clad aluminum wheels	□	□
AdvanceTrac® Electronic Stability Control	□	□
Cargo Management System	□	□
Heated driver and front-passenger seats with 2 heat settings ³	□	□
Intelligent All-Wheel Drive (AWD)	□	□
Leather-trimmed seats	□	□
Power-adjustable pedals with memory	□	□
Power moonroof with one-touch-open/close ⁴	□	□
Rear-Seat DVD Entertainment System with 2 sets of wireless headphones ⁵	□	□
Remote start (dealer installed)	□	□
Reverse Sensing System	□	□
SIRIUS Satellite Radio	□	□
Voice-activated DVD-based Navigation System ⁶	□	□

AVAILABLE PACKAGES

	SABLE	PREMIER
Interior Convenience Package – Includes Premium Sound System with AM/FM stereo/6-disc in-dash CD changer with MP3 capability, 8-way power driver seat, power-adjustable pedals, Dual-zone Electronic Automatic Temperature Control, automatic on-off headlamps with wiper-activated headlamps, and outside temperature display	□	□
Premier Wood Package – Includes woodgrain accents on steering wheel and shift knob ⁷	□	□
Security Package – Includes anti-theft perimeter alarm, heated sideview mirrors with security approach lamps, remote perimeter lighting and AdvanceTrac	□	□



17" 7-SPOKE BRIGHT-ALUMINUM
STANDARD ON SABLE



18" 7-SPOKE BRIGHT-ALUMINUM
STANDARD ON PREMIER



18" 7-SPOKE CHROME-CLAD ALUMINUM
OPTIONAL ON PREMIER



Get the ride you want. Whether you plan to lease or finance, you'll find the choices that are right for you at Ford Credit. Ask your Lincoln Mercury Dealer for details or check us out at www.fordcredit.com

Ford Motor Company Insurance Services Get Ford Motor Company quality in your auto insurance. Our program offers industry-leading benefits and competitive rates. Call 1.877.367.3842, or visit us at www.fordvic.com for a no-obligation quote. Insurance offered by American Road Services Company (in CA, American Road Insurance Agency), a licensed agency and subsidiary of Ford Motor Company.

Ford Extended Service Plan For a purchase or lease, the Ford Extended Service Plan (ESP) gives you "Peace-of-Mind" protection designed to cover key vehicle components and protect you from the cost of unexpected repairs. Ask your dealer for an ESP; the only service contract backed exclusively by Ford and honored at all Ford Lincoln Mercury dealerships.

Peace of mind comes from a 3-year/36,000-mile bumper-to-bumper **New Vehicle Limited Warranty** that covers repair, replacement or adjustment of parts at no additional cost, as well as a 5-year/60,000-mile powertrain limited warranty which features no deductible and is fully transferable. Roadside Assistance for 5 years or 60,000 miles provides the security of knowing that help may be only a phone call away should you run out of fuel, lock yourself out of the vehicle or need towing. Your Lincoln Mercury Dealer will provide complete details.



MERCURY | NEW DOORS OPENED

mercuryvehicles.com

©2007 Lincoln Mercury, Ford Motor Company. DM038LCA1